

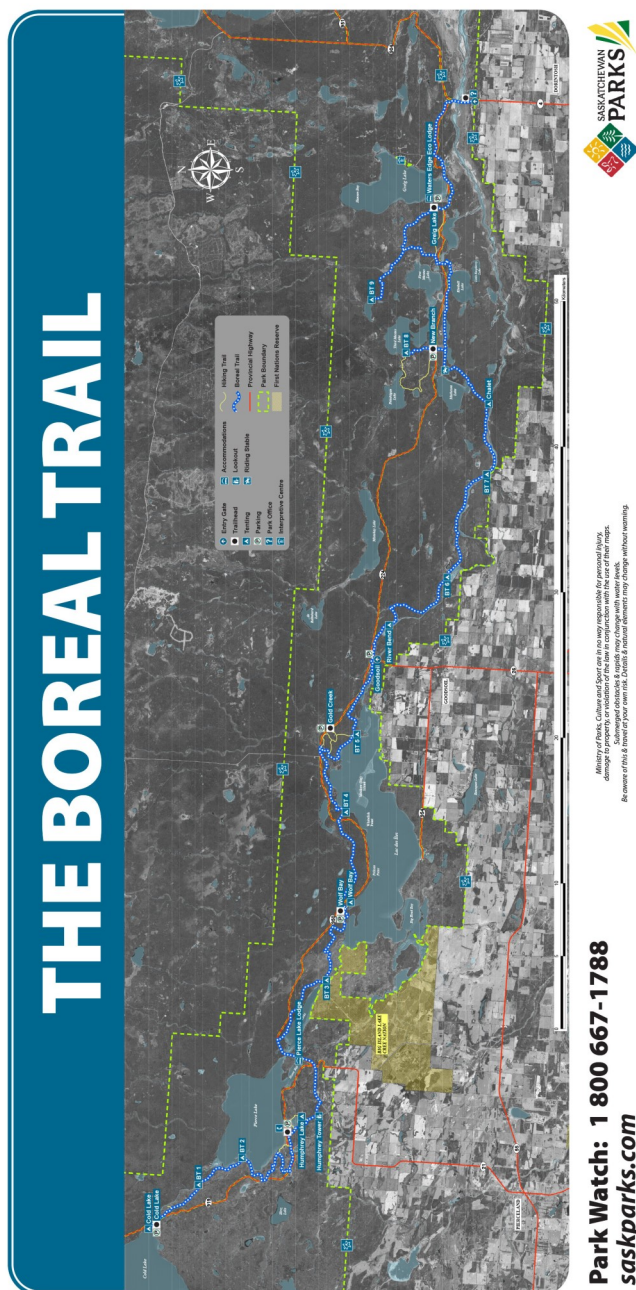
Trail Rules

All Hikers Must Check IN/OUT

Call 1-306-236-7680

Please leave a message if calling outside office hours.

1. **Stay on Trail:** Stepping off the trail can cause damage to small plants and hidden animal homes.
2. **Be Prepared:** Bring along a backpack with water, a snack and other equipment in case of an emergency.
3. **Leave No Trace:** Do not leave anything behind. The trail should look as though you were never there.
4. **Be respectful to wildlife:** This is their home, not ours. If you encounter wildlife on the trail be sure to keep your distance and give them space.
5. **Leave it alone if you don't know what it is:** There are some plants, berries and mushrooms in the forest that are poisonous and should be avoided.
6. **Don't touch baby animals:** Animal Mothers will often hide their young in the bush or tall grass. It's mother will come back for it.
7. **Be considerate of other trail users.**



**Meadow Lake
Provincial Park
Hiking Trails
Greig Lake, Kimball Lake,
Vivian Lake**



Meadow Lake Provincial Park
www.saskparks.com
Park Watch: 1-800-667-1788

Tel: 1-306-236-7680

Email: MeadowLake@gov.sk.ca



Haymeadow Hiking Trail—8 KM

Kimball Interpretive & Little Raspberry
Hiking Trail—6.3 KM

Vivian Lake Hiking Trail—3.8 KM

